



### The Sealite Advantage

- Complete AIS interface displaying accurate positioning and operational information about the AtoN
- Low power consumption, making the unit ideal for solar and AtoN installations
- Real time information
- Developed in accordance to IALA Recommendations and ITU Publications (ITU-R M. 1371-1)
- Operates in the VHF Maritime Mobile Band
- Enhances situational awareness
- Reduces maintenance costs

**Sealite's AIS AtoN (Automatic Identification System) operates in the international VHF Maritime Mobile Band, enabling Port Authorities and other users to remotely monitor the real-time status of their AtoN installation, whilst providing mariners in the broadcasting region crucial Message 21 information (as defined by the International Telecommunications Union (ITU)) about the navigation aid.**

The compact AIS AtoN TeleBeacon comes installed on Sealite's range of SL125 products and interacts with any AIS-enabled chart or radar screen, broadcasting information about the type and name of the AtoN and GPS position.

In addition, the AIS AtoN broadcasts AIS Message 6 - enabling the operator to monitor the AtoN for solar and battery voltage, flash setting, light status, meteorological data and a host of other parameters where fitted. This fixed frequency telemetry unit operates on the designated AIS1 and AIS2 channels.

In technology partnership with Maritec Ltd, the AIS Telebeacon can be supplied integrated to any of the SL125 and SLC400 - SL600 model lanterns - creating a completely integrated AIS-enabled AtoN.

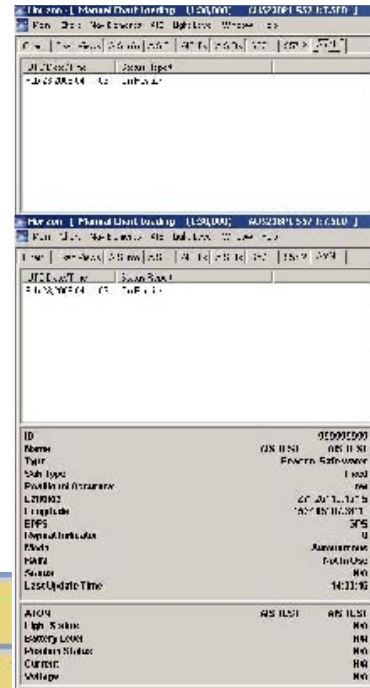
Sealite's AIS AtoN was developed in accordance with the International Association of Lighthouse Authorities (IALA) Recommendations, and ITU Publications.





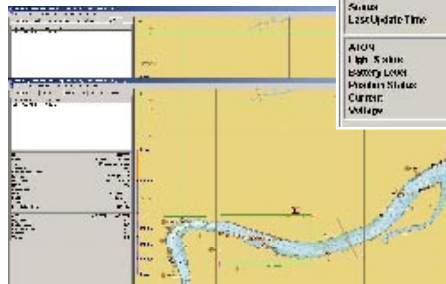
## Operational Information Provided to Base Station User via PC ICAN Software

Here all the main contents of message 21, AtoN message, (transmitted at a reporting rate of once every three minutes- ITU R-M. 1371-1 (Reference 1) paragraph 3.3.8.2.17) are displayed, just as the end user would view this information.



### Typical applications:

- AIS and remote monitoring systems
- Boundary marking
- Scientific research projects
- Traffic management
- Fitted to buoys, beacons, lighthouses
- Identify offshore structures
- Marking and identifying off-shore structures (wind farms, oil/gas platforms etc)



### Main Contents of AIS Message 21

- Name of AtoN
- Type of AtoN
- Positioning (latitude and longitude measurement)
- Positional Accuracy
- Time Stamp
- Dimensions of the AtoN and Reference Positioning

### Contents of AIS Message 6\* (Transmitted to Base Station)

- Light status
- Battery voltage
- Solar voltage

\* Additional software upgrade to user base station required to view message 6. Sealite can provide this on request.

